

ADP506x SDP Evaluation Software Installation

INSTALLATION STEPS

WARNING: DO NOT CONNECT SDP TO USB PRIOR TO INSTALLING DRIVERS

Step 1: Running the Installer

Double click on Setup.exe on the evaluation CD to start the installation.

Window 7/Vista Only: You may be prompted with a “User Account Control” security dialog (see Figure 1), click on **Yes** to proceed. Wait while the installer initiates.

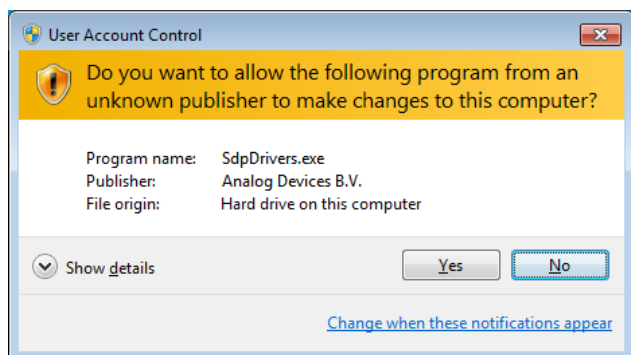


Figure 1. User Account Control.

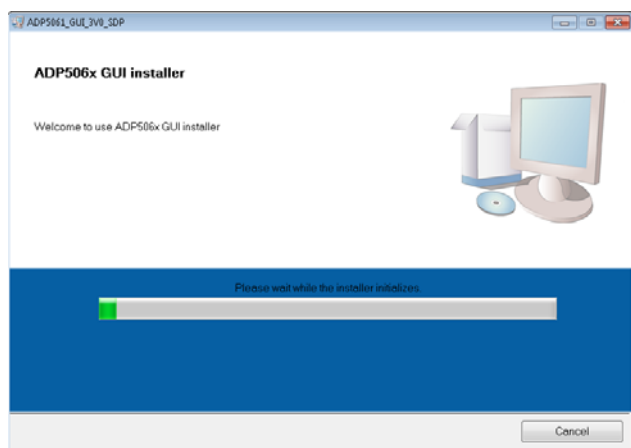


Figure 2. Installer Initialization.

Step 2: Choose the install location

Click on Browse to select a new destination folder for support files, or simply click **Next >>** to continue the install process.

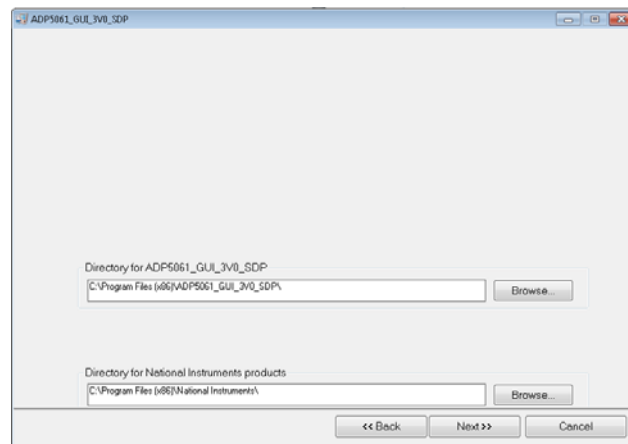


Figure 3. Installation Location.

Step 3: Click Next>> to accept installation

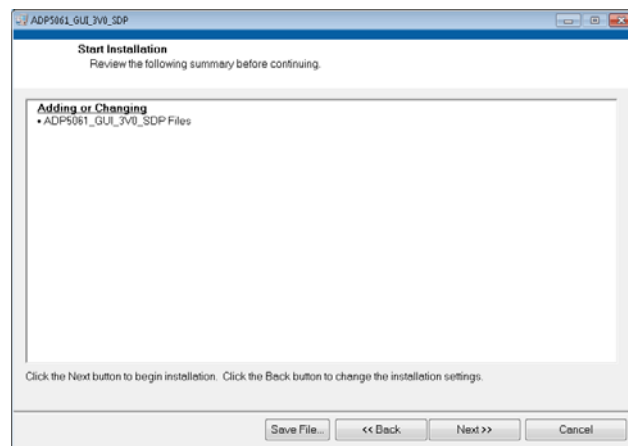


Figure 4. Start Installation.

ADP506x Software Installation

Step 4: Finish

When the install is complete, click **Finish** and the software is ready to use.

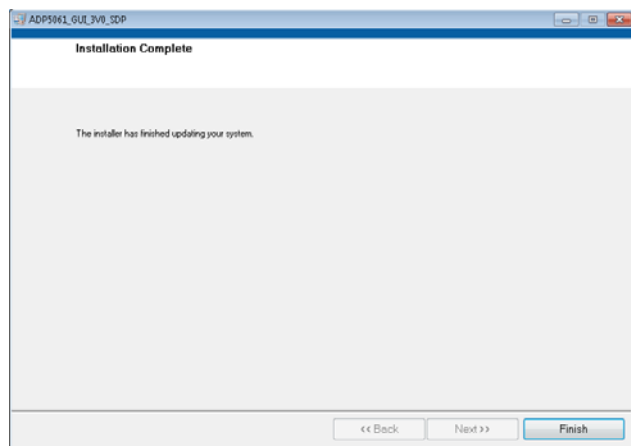


Figure 5. Finish Installation.